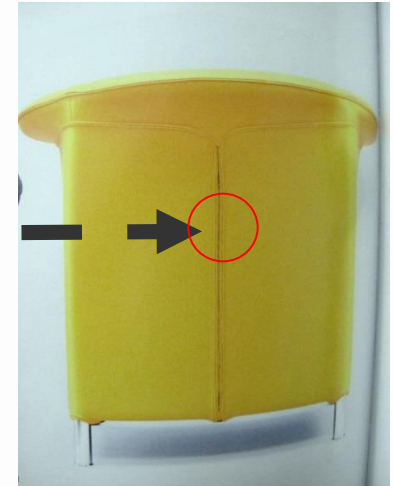


Sample double closure



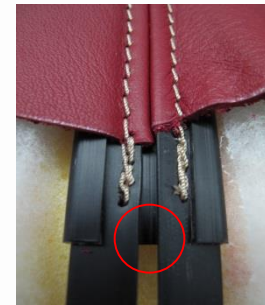
zip development
zipper teeth visible



Sample double closure



OKE-version
closure profiles



no teeth visible
closed seam guide
clean and uniform
transition
perfect look

2023-506



2023-M500



Double closures – sewing variants



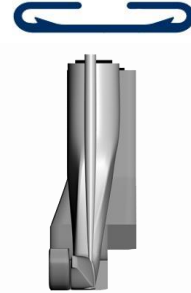
Double closures – sewing variants



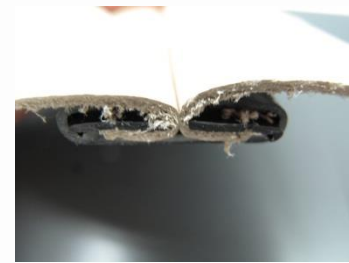
double closure



2023-S003



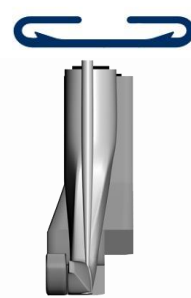
2023-506



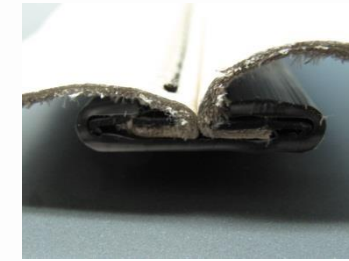
caps - unilateral



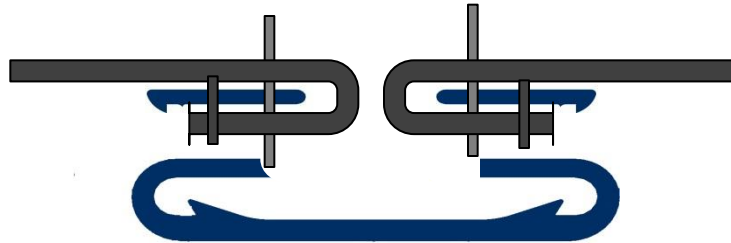
2023-M100



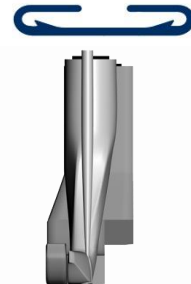
2023-506



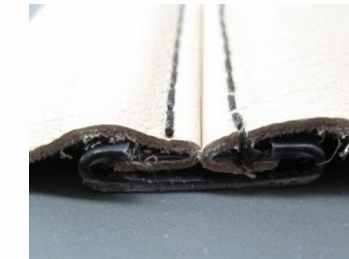
2 needle – decorative seam



2023-M100



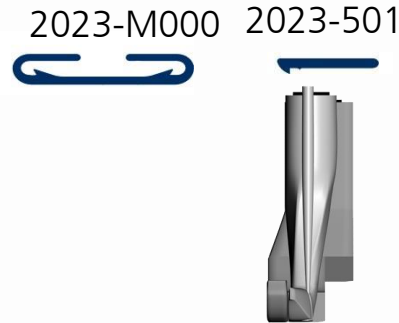
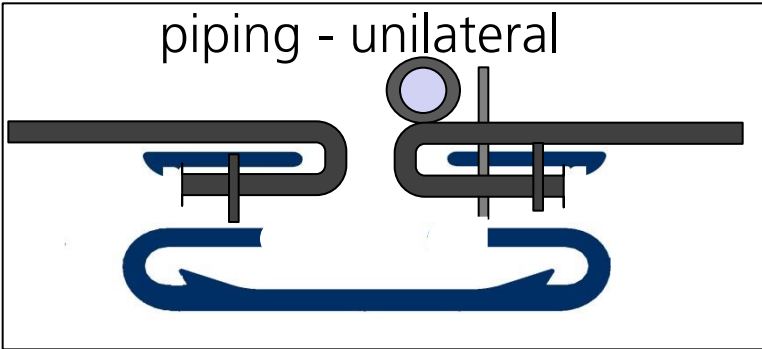
2023-506



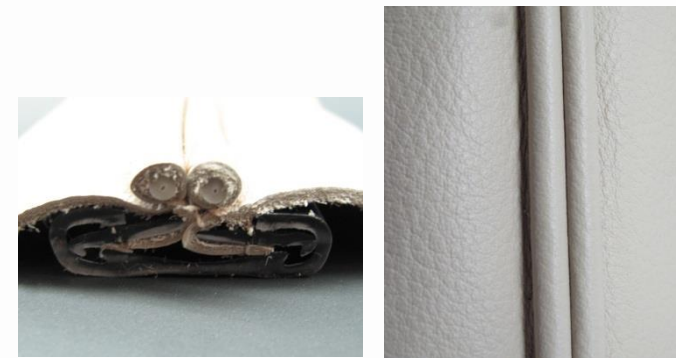
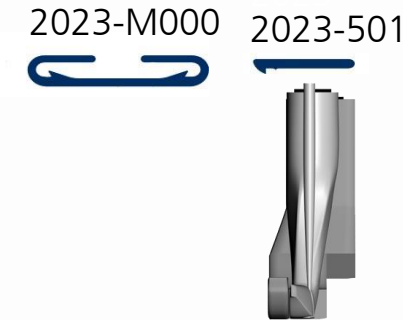
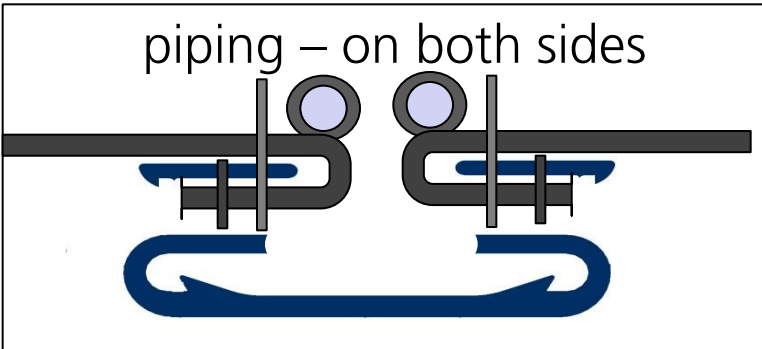
Double closures – sewing variants



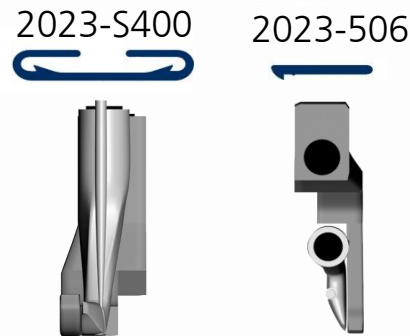
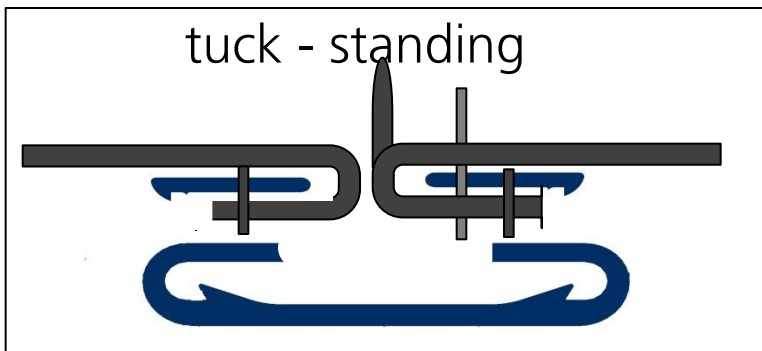
2023-M000 2023-501 piping - unilateral



2023-M000 2023-501 piping – on both sides



2023-S400 2023-506 tuck - standing



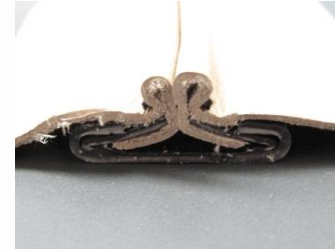
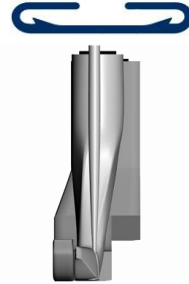
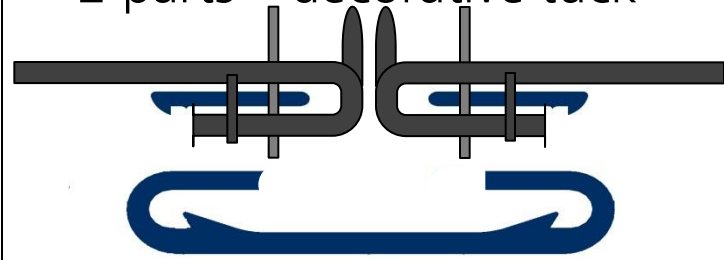
Double closures – sewing variants



2 parts – decorative tuck

2023-M100

2023-506



tuck – long lying with insert

2023-M100

2023-506

